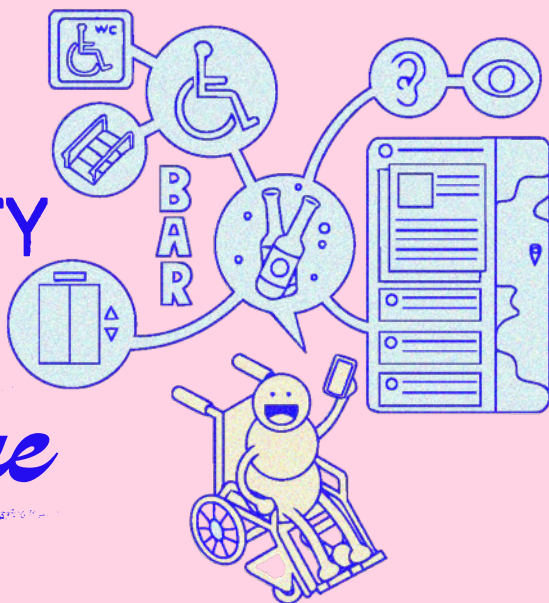




6 SIMPLE ACCESSIBILITY STEPS FOR

Your Venue



1 ACCESSIBLE INFORMATION (FREE)

Clearly share your accessibility features on your website and social media so guests can understand what to expect before visiting. Be transparent about what is available, what is not, and how your team supports guests when full accessibility isn't possible.

2 EASY ARRIVAL (FREE)

Provide clear directions from public transportation and ride services, highlight the most accessible route to the entrance, and identify a safe drop-off area with enough space for wheelchair users to comfortably exit the vehicle and assemble or position their chair

3 ACCESSIBLE ENTRANCE

Ensure step-free access when possible or provide a safe, stable portable ramp, clear signage, and trained entrance staff.

4 MOVE FREELY INSIDE

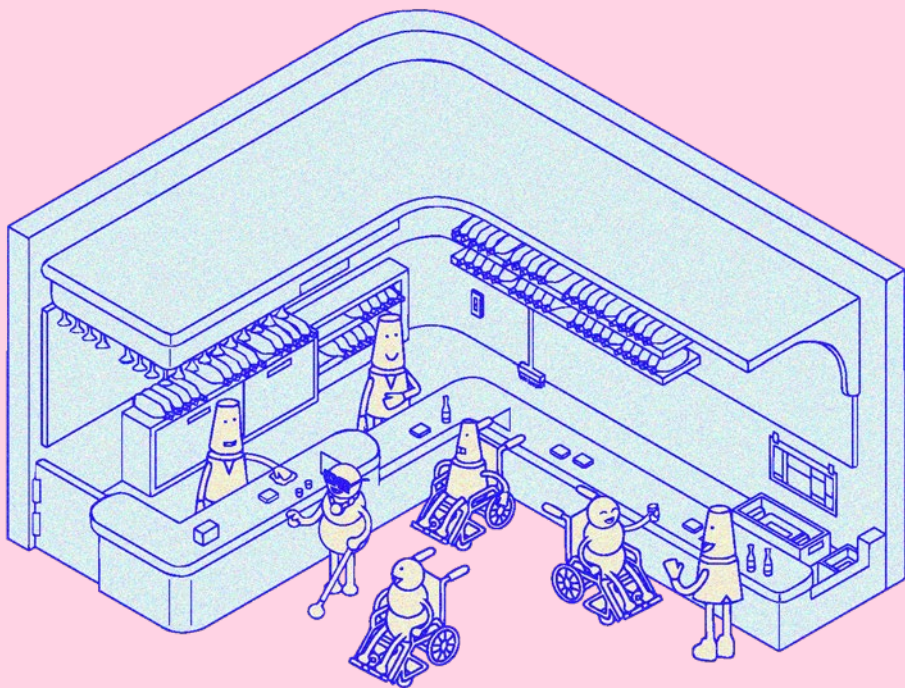
Keep paths clear for wheelchair users, provide accessible tables, and ensure menus are visible, within reach, and easy to read from a seated position. Design the space so people can move through it independently, without needing to ask for help.

5 RESPECTFUL SERVICE

Train staff to ask before helping, support independence, and speak directly to the person—not their companion.

6 SAFE AND SMOOTH EXIT

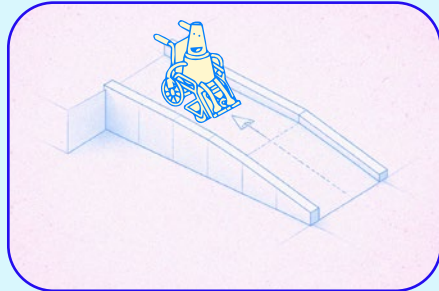
Ensure good lighting, obstacle-free paths, clear signage, and a safe place to wait for transportation.



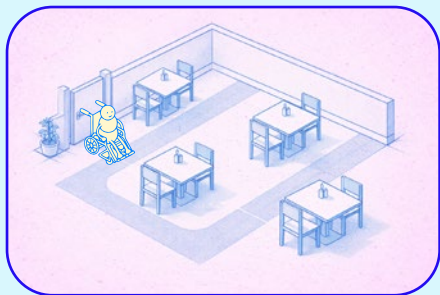
Key Technical Criteria



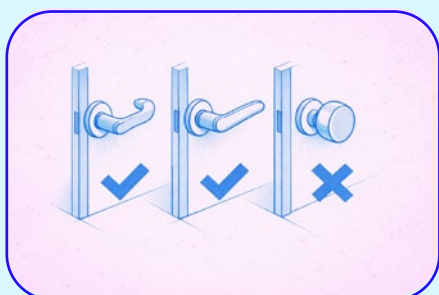
- Doors must provide enough clear width for wheelchair access. At least 85–90 cm (35 in)



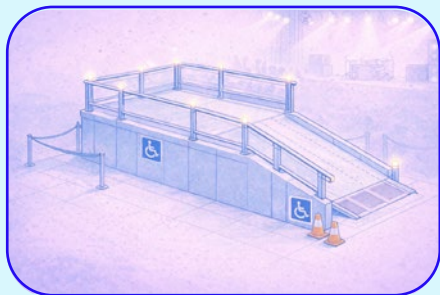
- Ramps should be wide, stable, and not too steep.



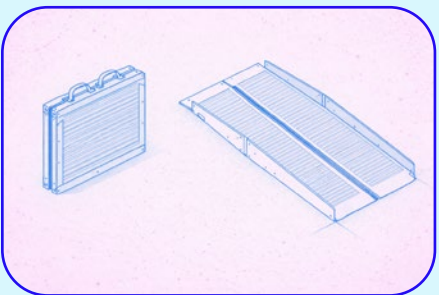
- Keep corridors clear. Avoid furniture, signage, or objects that block movement



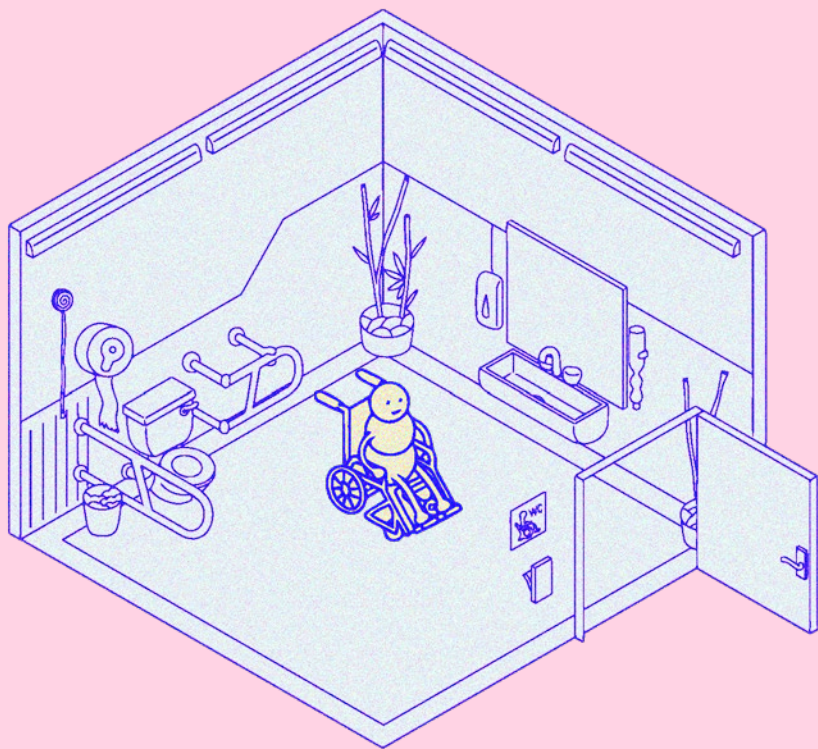
- Lever handles work best. Round knobs should be avoided.



- Provide raised platforms at concerts so wheelchair users can enjoy visibility and safety without being part of the crowd.

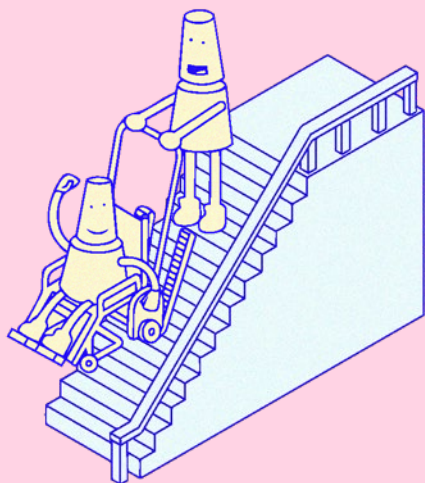


- Portable ramps can be stored on-site and used when needed



USABLE RESTROOM

Provide enough space to maneuver with a wheelchair, outward-opening doors, grab bars, accessible fixtures, and a clean, safe environment. Sinks should have clear space underneath, and an emergency pull cord should always be available. If this is not possible on-site, ensure a nearby accessible alternative and a clear solution.



PRACTICAL SOLUTIONS

Many accessibility barriers already have solutions. From portable ramps to adaptive wheelchairs, we can help. Contact us to explore the right solution for your venue.

LET'S MAKE IT ACCESSIBLE

If you're committed to making your venue accessible, we can help.

Wings for Wheels provides funding and tailored plans to support spaces that want to be part of this change

hello@wingsforwheels.org

WWW.W4W.FOUNDATION



W4W Toolkit **VOLUME 1**

**Focused on reduced mobility
and wheelchair users.**